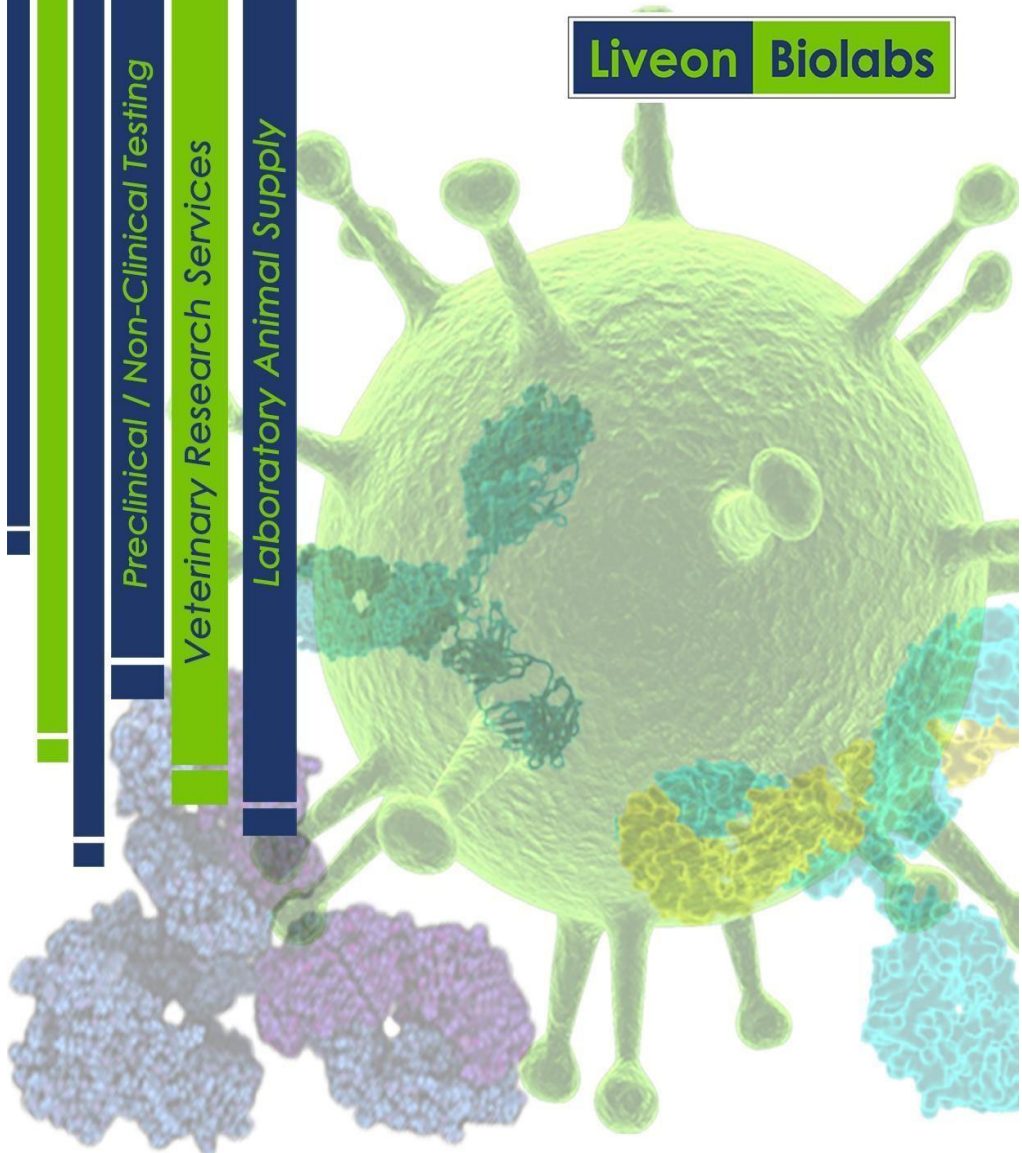


Liveon Biolabs

Preclinical / Non-Clinical Testing
Veterinary Research Services
Laboratory Animal Supply





Breeding and Supply of Quality Laboratory Animals

"Good Animal Care is Essential in Good Science"

Liveon Biolabs

Vivarium design and infrastructure

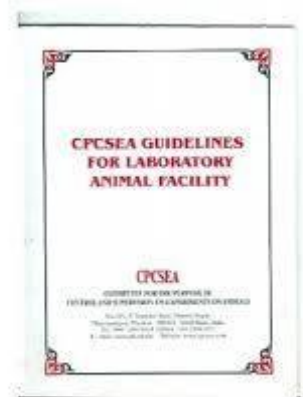
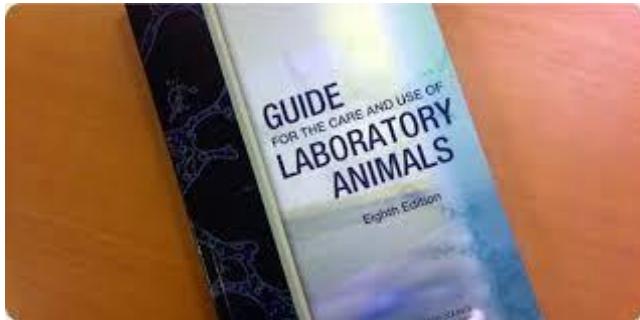
The animal facility has been designed to house animals in an appropriate species specific environment that meets all applicable policies, guidelines and regulations as outlined in the Guide for the Care and Use of Laboratory Animals (Guide), CPCSEA and animal welfare regulations. In addition, facility has met all the requirements of international standard as per Association for Assessment and Accreditation of Laboratory Animal Care, (AAALAC).

Our facility:

- ✓ Meet the projected holdings and programmatic requirements, while providing space for expansion and flexibility in utilization.
- ✓ Provide for efficiency of management through innovation and flexible design.
- ✓ Followed International standards in construction, operation, and maintenance.
- ✓ Has capacity for increased holding space.

Design Goals and Objectives

LIVEON BIOLABS PVT LTD has provided state-of-the-art animal research / breeding facilities to enhance and maintain its position in biomedical research. The LIVEON BIOLABS PVT. LTD. has accomplished this goal by constructing new animal research facility meeting the current trends in biomedical research. International guidelines have been applied to new animal research facility and to the extent possible, to the renovation projects that are in full swing progress.



Species and strain maintained in Vivarium

Mice Strains

C57BL/6 or C57 Black 6 or Black 6 Mice

Best Study Model for

- Diet induced obesity studies.
- Safety/Efficacy studies.
- Heart failure models.
- Diabetes studies
- Infectious disease screening.
- Acute gastrointestinal infection studies.



BALB/c Mice

- BALB/c is an albino mice inbred strain. It plays an important roles in oncological research.
- Body weight of male and females are almost equivalent and are sensitive to carcinogens. They develop lung tumors, reticular neoplasm's, renal tumors, and others tumor variants, making it a good candidate for cancer recovery studies and Immunological studies.

Best Study Model for

- Cancer therapy studies.
- Immunological studies.
- Antibody production (Monoclonal).
- Viral defense studies.
- DNA vaccine studies.
- Antifungal immune response studies.



Swiss Albino Mice

An Outbred albino for multipurpose use.



Best Study Model for

- Toxicity models.
- Efficacy Studies.
- Safety Studies.
- Multipurpose model.

Breeding and Supply

Rat Strains

Sprague Dawley Rat

- The Sprague Dawley rat is an outbred multipurpose breed of albino rat used extensively in medical research. Its main advantage is its calmness and ease of handling. These rats typically have increased tail to body length ratio compared with Wistar rats.



Best Study Model for

- Toxicology studies.
- Safety and Efficacy studies.
- Contemporary toxicology research.
- Neurobiology research.

Breeding and Supply

Wistar Rat

- The Wistar rat is an outbred albino rat. It is currently one of the most popular rats used for laboratory research.
- It is characterized by its wide head, long ears, and having a tail length that is always less than its body length.

Best Study Model for

- Cardiotoxicity studies.
- Nephrotoxicity research.
- Neurotoxic studies.
- Aging model.
- Safety / efficacy pharmacological studies.



Breeding and Supply

Rabbit

New Zealand White

Best Study Model for

- Cardiotoxicity studies.
- Dermatology studies.
- Ophthalmology.
- Antibody production.
- Renal studies.



Breeding and Supply

Guinea Pig

Dunkin Hartley

- Similar to dietary requirements of humans, Guinea pigs also require external source of vitamin C.
- They serve as good source of serum complement. A well suited model for auditory and immunological research.



Best Study Model for

- Otological Research (Human complement).
- Immunological studies.
- Allergic studies.
- Multipurpose and surgical models.
- Antibody Production.

Breeding and Supply

Hamster

Golden Syrian

- Golden brown and white patched hamsters are the best model for hormonal effects and reproduction research.
- They also well suite investigations on dental caries, nutritional studies, cardiovascular and pharmacological research in infectious disease and pathological investigations.



Best Study Model for

- Carcinogenic studies.
- Toxicology studies.
- Behavioral studies.

Breeding and Supply

Vivarium

- 20,000 Sq. ft. Vivarium designed and built according to the international standards.
- Class 100,000 facility with efficient HVAC system.
- 100% fresh air in and 100% exhaust systems for animal rooms
- Dual corridor system
- Isolated procedure rooms
- Completely secured with fire safety, CCTV cameras and Access Control Systems

Staffing

Sufficient vivarium staff includes veterinary staff, attending veterinarians, administrative staff, research and technical support staff, supervisory managers, skilled animal caretakers and support staff.

Environmental Conditions

Vivarium has standard environmental conditions and facility for

- *Temperature and humidity control*
- *Light control*
- *Use of nonporous materials in construction*
- *Pest control measurements*
- *Species specific breeding requirements*
- *Cold storage*
- *Research/lab supply storage*
- *Dedicated feed and bedding storage areas*
 - *Adjacent research procedure space requirements*
 - *Uniform lighting throughout to prevent shade and shadow*



Utilities

- Isolation areas
- Procedure rooms
- Diagnostic/pathology laboratory
- Wash area
- Cage/rack repair room/shop
- Feed and bedding storage
- Biomedical waste storage area / cold storage
- Decontamination and receiving area
- Quarantine rooms





Flexibility and Adaptability

Animal facility is specially designed to maximize the animal holding capacity and to accompany utility services. The animal facility provides flexibility to accommodate changes in function without amending major changes to the facility. Spaces have been designed to hold multiple species. Flexibility in design of these critical areas provides for rapid accommodation of future programmatic changes and efficient space utilization.

Expansion/Renovation Considerations:

Vertical and horizontal expansion of an animal research facility were considered during the planning phase. It is possible to construct any expand with minimal interference to the operation of the present facility.

Ethical Considerations

Absolute care have been taken to avoid inflicting unnecessary and avoidable pain to the animals. Experimental procedures on the animals are carried out only under the supervision/guidance of appropriately qualified persons. An Ethical Committee consisting of experts approve the experiments involving live animals.



Gallery



Contact us



India

Liveon Biolabs Pvt. Ltd.
#46&47, Water Tank Road,
KIADB Industrial Area,
Phase-II, Antharasanahalli,
Tumakuru, Karnataka-572106, India.
Phone: +91 816 2211195
Mob: +91 9480849734
Email: info@liveonbiolabs.com

UK

Liveon Biolabs Pvt. Ltd.
#25, King Edwards Wharf,
Sheepcote Street , Birmingham,
United Kingdom –B16 8AT
Ph. No.: +44(0)121 4563031
Cell : 44(0)7748975995
Email: info.uk@liveonbiolabs.com
giri@liveonbiolabs.com

USA

Dr.Shivanand Utlasar
Ph. No. : (001) 315-717-7500
Email: info.usa@liveonbiolabs.com
shivanandutlasar@liveonbiolabs.com

www.liveonbiolabs.com